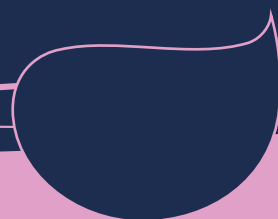




n o v o x<sup>®</sup> *cup*



n o v o x<sup>®</sup> 

Mini 

Mini  
Pin 

## Novox<sup>®</sup>-Cup

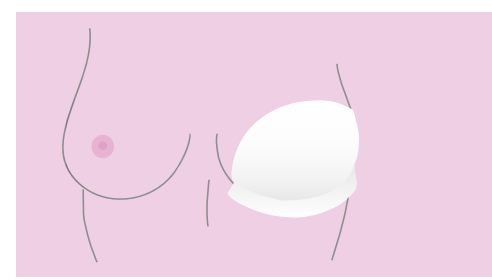
## Novox<sup>®</sup>-Cup Mini

## Novox<sup>®</sup>-Cup Mini-Pin

Class IIB disposable medical devices to be applied directly to injured skin.  
Internally coated with oxygen-enriched oil releasing **Reactive Oxygen Species (ROS)**.

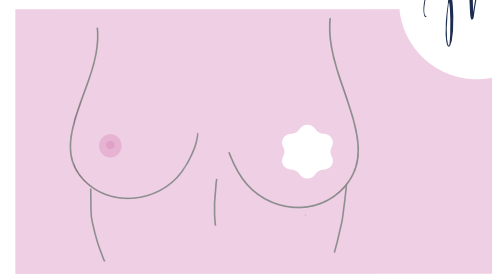
## INDICATIONS OF USE AND ADVANTAGES

- 1 — Surgical incisions resulting from breast surgery and their scarring
- 2 — Injuries, burns or loss of breast substance following chemo or radiotherapy
- 3 — Breastfeeding fissures
- 4 — Soothing and pain-reducing action of the mammary skin surface

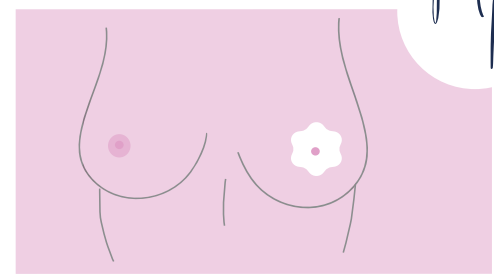


n o v o x<sup>®</sup> 

Thanks to its cup shape, **Novox<sup>®</sup>-Cup** is perfectly adaptable to the entire mammary skin surface and allows treating scars or lesions extended to the entire breast area.



Mini 



Mini  
Pin 

**Novox<sup>®</sup>-Cup Mini** and **Novox<sup>®</sup>-Cup Mini-Pin** are specifically indicated for the treatment of scars or lesions of the periareolar area.

## MECHANISM OF ACTION

1

**Novox®-Cup, Novox®-Cup Mini and Mini-Pin** perform a film-forming and microbial contrast action, opposing the contamination of the lesion / wound by pathogens

2

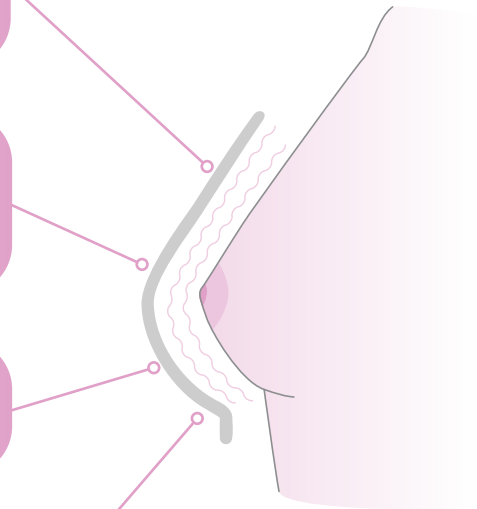
**Novox®-Cup, Novox®-Cup Mini and Mini-Pin** facilitate the healing of surgical scars or chronic skin lesions, by creating a local favourable environment for optimizing skin microcirculation

3

**Novox®-Cup, Novox®-Cup Mini and Mini-Pin** have a soothing effect

4

**Novox®-Cup, Novox®-Cup Mini and Mini-Pin** act on the local microenvironment of the lesion, contributing the activation of the granulation tissue and the consequent re-epithelialization of acute and chronic lesions



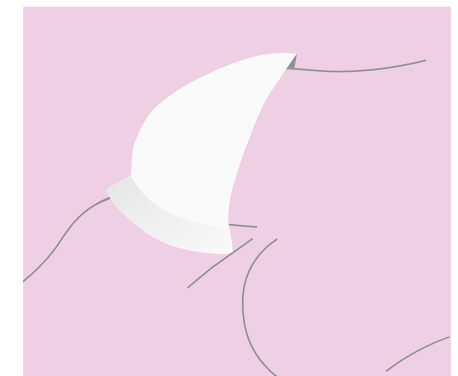
## METHOD OF USE

**Novox®-Cup, Novox®-Cup Mini and Novox®-Cup Mini-Pin** can be used as:

1

### POST-OPERATIVE DRESSING

The devices are used, at the end of the surgery, as post-operative dressing, before the patient awakens. They are directly applied on the surgical incisions. The variety of shapes allows to treat all the scars deriving from breast interventions, in oncology and plastic, reconstructive and aesthetic procedures. The dressing is supported by the bra, likewise placed at the end of the surgery. Replacement is recommended every 24/48 hours.



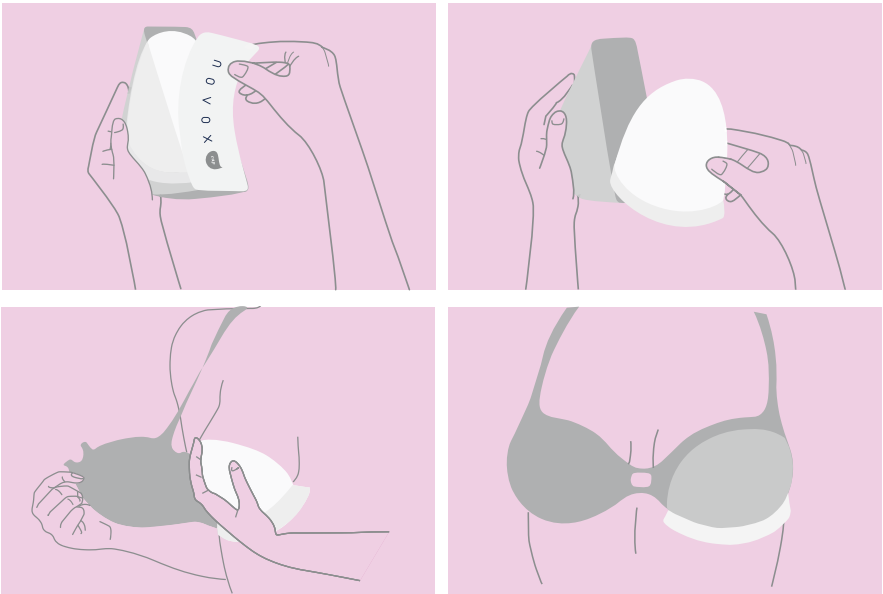
2

### HOME TREATMENT

Once discharged, the patient can replace the dressing at home during the first 2 weeks or longer, at discretion of the doctor. The dressing is always placed directly on the skin and supported by the bra. Replacement is recommended every 48 hours.

## MEDICATION REPLACEMENT

- 1. Wash and disinfect your hands, alternatively use disposable gloves
- 2. Cleanse the scar (or lesion) with physiological solution
- 3. Dry with sterile gauze
- 4. Open the device package
- 5. Fit the medication directly on the breast
- 6. Put on your bra
- 7. Make sure the medication snugly fits your breast by checking that the lower part of the device protrudes from the lower edge of the bra.



## AVAILABLE SIZES

NOVOX<sup>®</sup> cup

**Novox<sup>®</sup>-Cup** is available in the following sizes:

- S** (NCP-S)
- M** (NCP-M)
- L** (NCP-L)
- XL** (NCP-XL)

NOVOX<sup>®</sup> cup Mini

**Novox<sup>®</sup>-Cup Mini** (NMI)  
and **Novox<sup>®</sup>-Cup Mini-Pin** (NMI-F)  
are available each in one single size.

NOVOX<sup>®</sup> cup Mini Pin

## Bibliography

- Santorelli et al.. Aesthetic Surgery Journal Open Forum 2021, 1-10.



**MOSS S.p.A.** Via all'Erno, 5 - 28040 Lesa (NO) - Italy  
Tel. +39 0322 772032 - Fax +39 0322 292733  
moss@moss-info.it - [www.novox.it](http://www.novox.it)

**Distributor in Ireland and Northern Ireland:**



Unit 5 Bromley Business Park  
Kilpedder, Co. Wicklow, A63 X924  
ROI +353 1 201 4620 - NI +44 28 9099 5160  
[sales@fleetwoodhealthcare.com](mailto:sales@fleetwoodhealthcare.com) - [www.fleetwoodhealthcare.com](http://www.fleetwoodhealthcare.com)

**CE** 0477

Rev. 06-IR April/2022